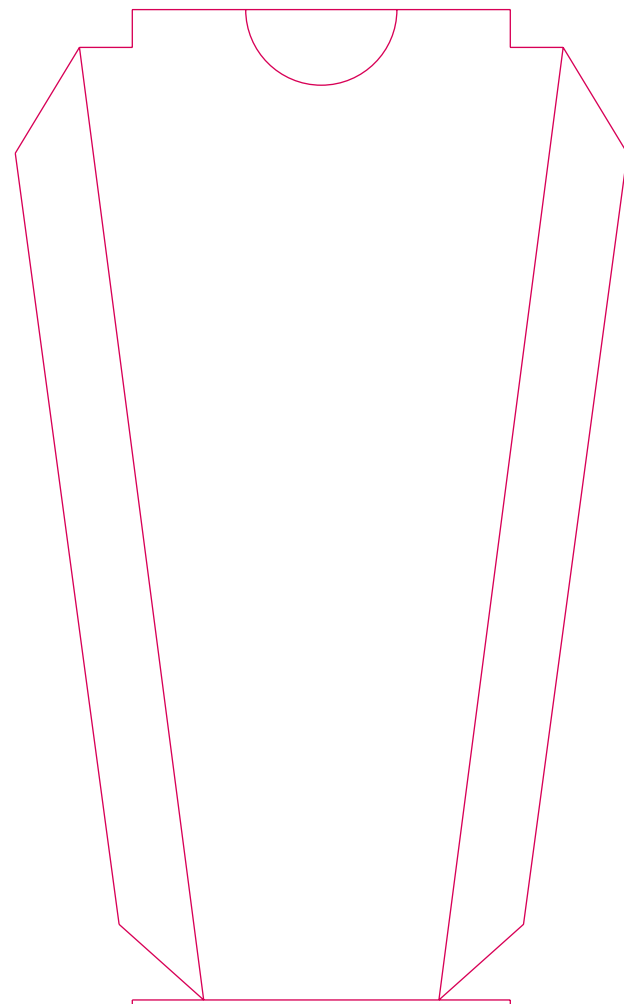


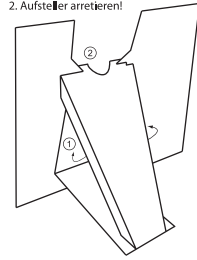
3 mm

Klebefläche

# A



1. Bitte Aufreißer ausklappen und Stabstiele nach innen klappen!
2. Aufreißer ansetzen!



Adventskalender gefüllt mit Vollmilch-Schokolade von Lindt

Milch-, weiße und feinherbe Schokoladen mit verschiedenen Füllungen.

Zutaten: Zucker, Kakaobutter, pflanzliches Fett (Kokosnuss, Palmkern), Vollmilchpulver, Kakaomasse, Haselnüsse, Milchzucker, Buttersenf, Magermilchpulver, Emulgator (Sojalecithin), Gerstenmalzextrakt, Aromen. Kann andere Schalenfrüchte enthalten.

Kühl und trocken lagern.

NÄHRWERTINFORMATION pro 100 g:	
Energie	2475 kJ / 595 kcal
Gesamt fett	41 g
- davon gesättigte Fettsäuren	28 g
Kohlenhydrate	49 g
- davon Zucker	45 g
Eiweiß	5,8 g
Salz	0,11 g

Mit Lindt Produkten hergestellt.

Inhalt: e 110 g Charge:

Mindestens haltbar bis Ende: 03/2018

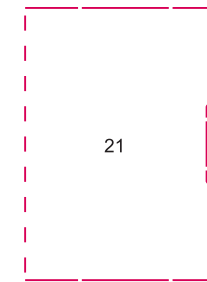
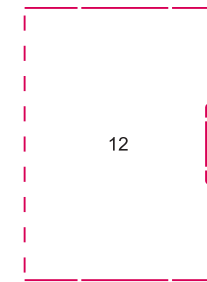
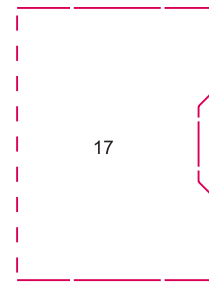
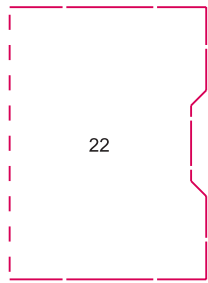
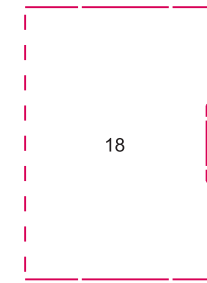
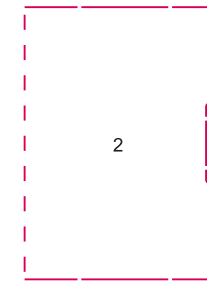
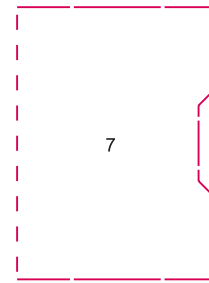
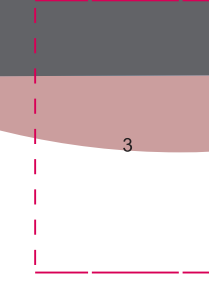
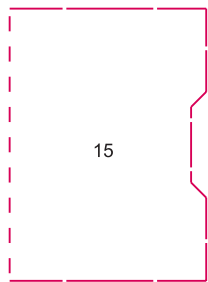
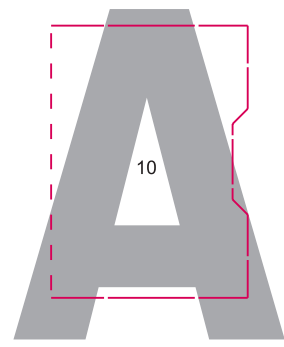
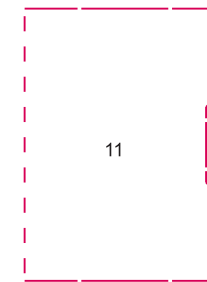
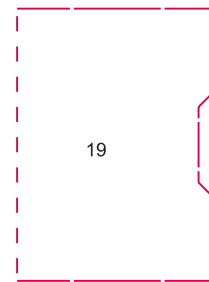
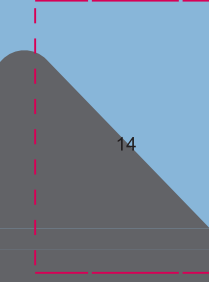
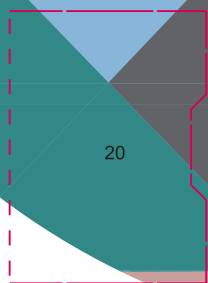
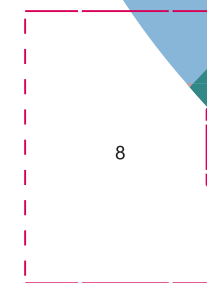
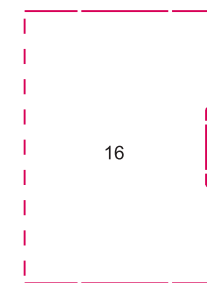
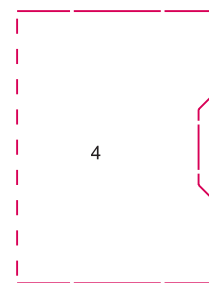
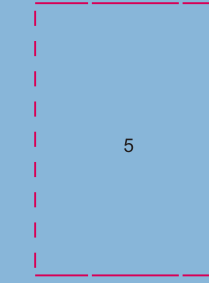
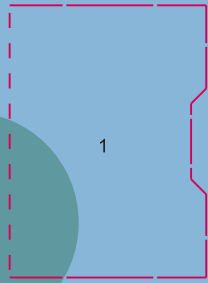
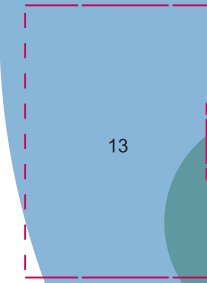
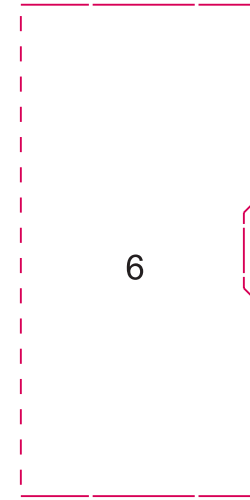
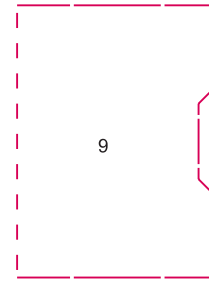
CD-LUX Adventskalender GmbH

Industriestraße 8 | D-93455 Wilting | www.cd-lux.de

Verbraucher-Service ☎ 0800 - 351 51 51 (gebührenfrei)



3 mm



3 mm

3 mm

