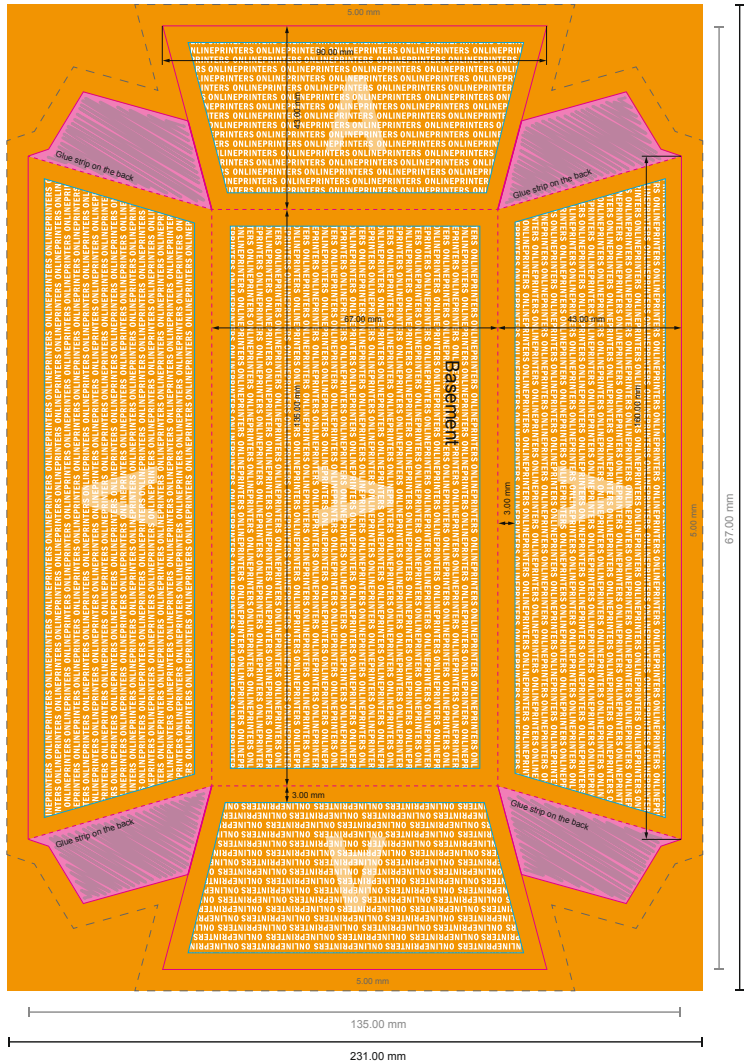


13.5 x 6.7 x 4.3 cm

Format view rotated by 90 degrees.

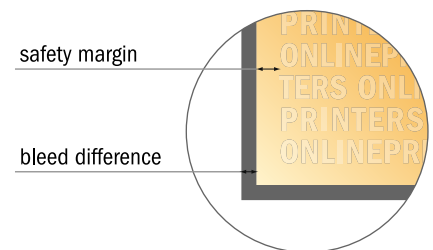


NOTE

Please remove the die line from the download template before generating your artwork files.
Please provide a second file (view file) to specify the position of the die line.

- Data format:
22.10 x 15.30 cm
- Data format (incl. 5.00 mm bleed):
23.10 x 16.30 cm
- Trimmed size:
13.50 x 6.70 cm

- **Safety margin**
Maintaining 4 mm space between the text/information and the edge of the trimmed format prevents undesirable cuts.



Please note:

- Allow for trim allowance and safety margin according to instructions.
- Arrange background graphics, images or graphics up to the edge of the data format.
- Tolerances may occur during production due to cutting, punching and folding processes.
- This sketch is not drawn to scale.
- Printing data: Instructions and templates can be found under the menu item "Printing data" at www.onlineprinters.com.