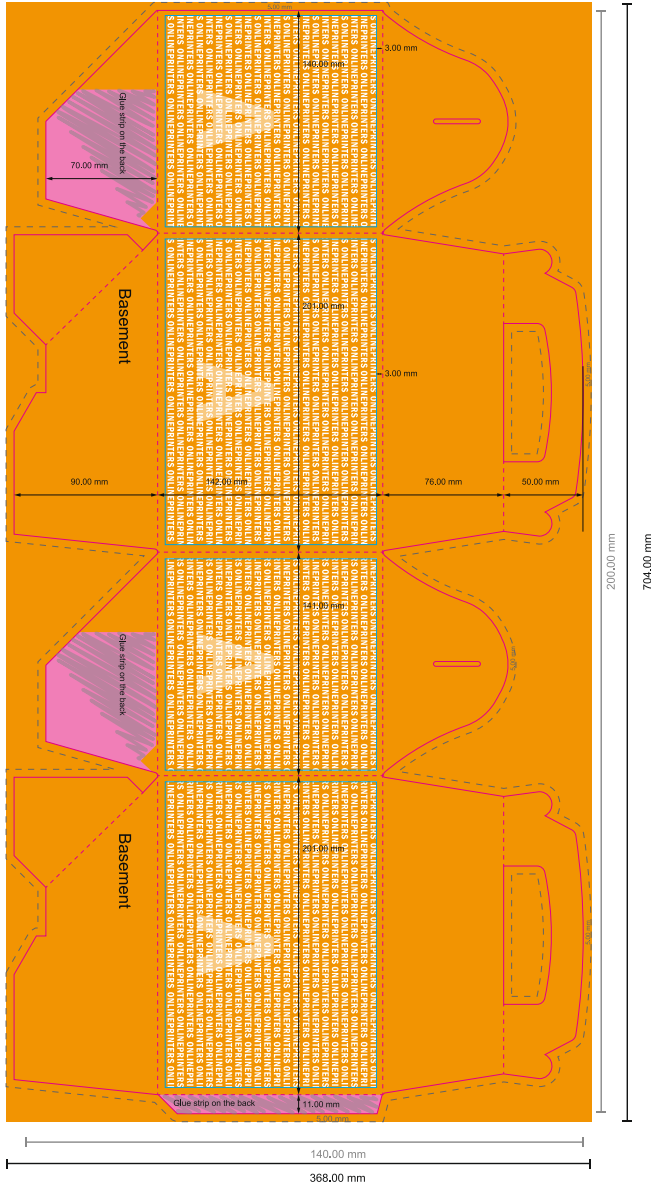


20.0 x 14.0 x 14.0 cm

Format view rotated by 90 degrees.



**NOTE**

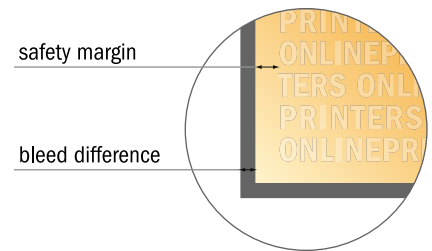
Please remove the die line from the download template before generating your artwork files.  
Please provide a second file (view file) to specify the position of the die line.

- Data format:  
69.40 x 35.80 cm

- Data format  
(incl. 5.00 mm bleed):  
70.40 x 36.80 cm

- Trimmed size:  
20.00 x 14.00 cm

- **Safety margin**  
Maintaining 4 mm space between the text/information and the edge of the trimmed format prevents undesirable cuts.



**Please note:**

- Allow for trim allowance and safety margin according to instructions.
- Arrange background graphics, images or graphics up to the edge of the data format.
- Tolerances may occur during production due to cutting, punching and folding processes.
- This sketch is not drawn to scale.
- Printing data: Instructions and templates can be found under the menu item "Printing data" at [www.onlineprinters.com](http://www.onlineprinters.com).